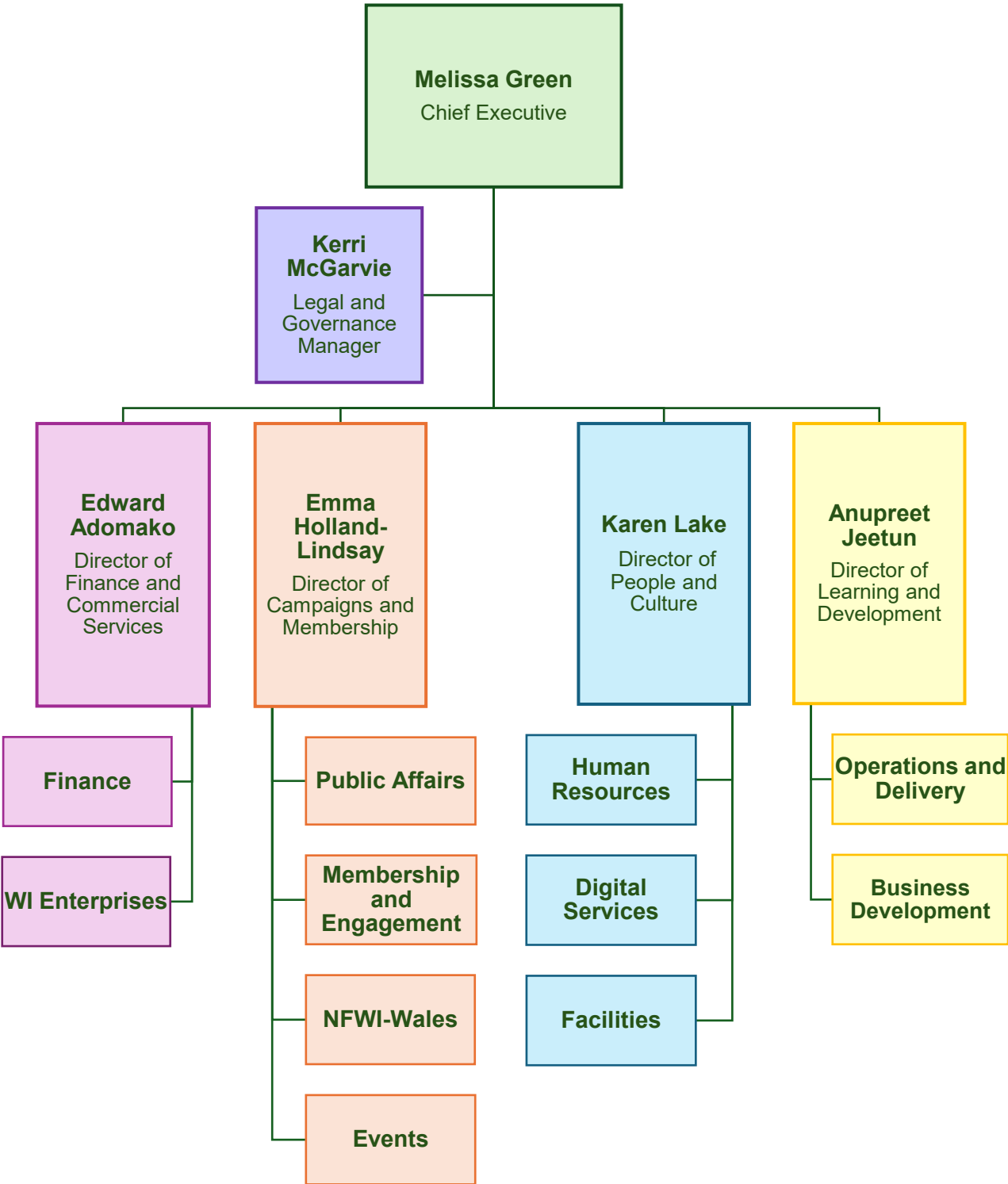


**NFWI Structure and Staffing List as of July 2025**



Finance and Commercial Services	
Edward Adomako	Director of Finance and Commercial Services
<b>Finance</b>	
Thasha Ravennaath	Finance Manager
Kala Ratnakumar	Finance Officer
Erika Kaic	Finance Officer
Dawn Kent	Finance and Data Protection Support Officer
<b>WI Enterprises</b>	
Genevieve Sioka	Head of Commercial- WI Enterprises
Carlos Fialho	Marketing and Project Manager
Jules Storer	Marketing and Project Assistant
<b>Advertising</b>	
Ian Armstrong	Interim Display Sales Manager
Shirley McGlynn	Display Sales Executive
Colm Cousins	Classified Sales Executive (fixed-term)
<b>Editorial</b>	
Megan Baffoe	Editorial Assistant
Sarah Drew Jones	Freelance Editor

Campaigns and Membership	
Emma Holland-Lindsay	Director of Campaigns and Membership
<b>Public Affairs</b>	
Aanchal Mann	Campaigns and Public Affairs Manager
Tobias Arnø	Research and Campaigns Officer
Ellie Brain	Research and Campaigns Officer
Bláithín Carroll	Campaigns Assistant
<b>Membership and Engagement</b>	
Joanna Rayner	Head of Membership and Engagement
Vicky Constantine-Foster	Membership Operations Manager
	<i>Membership Development Manager (vacant)</i>
Francesca Pal	Membership Support Officer
Charlotte Maughan	Membership Assistant
Rob Dyson	Freelance PR Consultant
<b>NFWI-Wales</b>	
Rhian Connick	Head of NFWI-Wales
Sarah Thomas	Public Affairs Officer
Lisa Howells	Events Coordinator
Hannah Battrick	Membership Development Officer (fixed-term)
	<i>Administrative Assistant (vacant)</i>
<b>Events</b>	
Kelly Rosser	Events Executive

<b>People and Culture</b>	
<b>Karen Lake</b>	Director of People and Culture
<b>Human Resources</b>	
<b>Andrea Mitchell</b>	HR Manager
<b>Katie-Niamh Meehan</b>	HR Coordinator
<b>Digital Services</b>	
<b>Jason Douglas</b>	Head of Digital Services
<b>Alexandra Taufmann</b>	Digital Content Editor
<b>Olivia Li</b>	Digital Assistant
<b>Facilities</b>	
<b>Latel Monks</b>	Facilities Manager
<b>Kate Robinson</b>	Facilities and Events Assistant

<b>Learning and Development</b>	
<b>Anupreet Jeetun</b>	Director of Learning and Development
<b>Emma Stenning</b>	Committee Administrator
<b>Dominique Walravens</b>	Customer Support Assistant
<b>Operations and Delivery</b>	
<b>Kelly Mauger</b>	Education Operations Manager
<b>Michelle Branch</b>	Training and Quality Assurance Officer
<b>Business Development</b>	
<b>Helen Neal</b>	Business Development Manager
<b>Lucy Willis</b>	Business Development Officer