

Chairman's Column



Hasn't it been lovely to enjoy some sunshine during June. The garden all planted up and growing like mad, weeds as well as flowers and vegetables. The lawn needs mowing twice a week which is good exercise so helps work off the extra treats that are all around and to be enjoyed in the sun. Summer is no fun without cream teas and ice cream as well as strawberries that should never be eaten without a little bit of cream. Just remember moderation in all things and enjoy all the lovely walks that the sunshine encourages us to go on.

I hope your WI has managed a get together now, a chat at the park, a gathering in a village hall car park or a members garden, or a walk. There are lots of ways we can meet and connect with each other while being careful to be mindful of everyone's safety. It can be daunting to start to mix with others but, masks, sanitiser and safe distance outside can help us all feel a sense of normality and reconnect with our WI friends face to face. Don't forget to send photos in for the Facebook page and County News so that we can all see what you have been doing and get some ideas for our own WIs.

I enjoyed watching the NFWI online Annual Meeting, not as good as attending in person but an excellent substitute. The three speakers were all excellent and I was able to do some ironing at the same time. After the meeting the new National Board of Trustees met and elected Ann Jones from Ceredigion Federation as the new NFWI Chair. We all wish her, and the new Board, well and hope they enjoy their term of office. We also send our thanks to retiring Chair Lynne Stubbings and the Board Members who also stood down and know what a difficult time they have had this last two years.

This year, as County News is online the office is putting together an August edition instead of the usual combined July/ August edition so make sure you look out for that next month. Send any items for inclusion into the office and see yourself in print!

Take care all, Janet

Art & Crafts

We are still hoping to run a Swap Shop event in September, a Hardanger workshop in October and a Beginners Goldwork workshop in November - all at WI House. At the time of writing this, it is still uncertain what COVID regulations and advice will be after June 21st, so, look out for dates being advertised in County News and on the website www.leicestershire-and-rutland.thewi.org.uk where you can click through to federation events.

You can also register your interest now by emailing our chairwoman with your name, your WI, your phone number and the event you are interested in. You will be contacted when dates are fixed.

Please contact **Eileen Williams**. Email: eileenwilliams@lrfwi.org



Federation Chairman
Janet Kirk
janetkirk@lrfwi.org

Federation Secretary
Sarah Freeman
fedsec@lrfwi.org

Accounts Assistant
Anila Patel
finance@lrfwi.org

Web Editor
Margaret Carter
margaretcarter@lrfwi.org



Leicestershire & Rutland Federation of Women's Institutes
incorporated in England and Wales as a Company limited by Guarantee No. 02769771 Charity Reg No. 1016 766

WI House, 135 Loughborough Road, Leicester, LE4 5LQ

Tel: 0116 2661342 Email: wihouse@lrfwi.org

Opening hours: Mon-Thurs 9.30am—1.30pm

www.leicestershire-and-rutland.thewi.org.uk or scan QR code

Find us on Facebook: Leicestershire & Rutland Federation of WIs



Membership

The LRFWI Membership Committee is responsible for assisting WIs with any help they require. I hope you find the following items useful. Mandy Cutler, Membership Committee Chair.

Q&A Session for Potential Trainee WI Advisers



Are you interested in becoming a WI Adviser?

Are you?

Dynamic and inspirational
A good communicator
Enjoy meeting people
Enjoy helping others
Well organised

WI Advisers are members just like you, who have been put forward by the federation to fulfil this role. As a WI Adviser you would establish new WIs and help existing WIs to grow by promoting membership, providing advice, and running training sessions.

As well as developing new skills, such as public speaking and digital communication, training will offer you a recognised qualification. Why not contribute to the success of LRFWI and beyond?

It is a rewarding role and full training is provided to volunteers with all expenses paid. NFWI trainers provide training in a blended learning format – online webinars and residential sessions.

Candidates should have served on their own WI Committee as well as being familiar with a range of IT systems.

Prior to beginning training, candidates will also have observed WI Advisers at work by attending meetings of the LRFWI Membership Committee - for at least a year - and accompanying advisers on visits to WIs.

The Membership Committee meet monthly – currently on Zoom.

Want to know more?

We are planning an **online Q&A session** on the evening of **Monday 27th September**, starting at 7.00pm.

Please email WI House, at: wihouse@lrfwi.org

Deadline: Wednesday September 1st.

For further information about the role and training involved go to:

<https://mywi.thewi.org.uk/federation-team/federation-roles/wi-advisers>

Congratulatory Certificates on My WI



Let's celebrate our members and thank them for their amazing contributions!

We have long-standing members who have contributed much of their time, skills and efforts to the WI.

WIs already thank, recognise and celebrate these members and to assist with this the NFWI Membership and Engagement Team have created **Congratulatory Certificates which have been signed by the Chair of the NFWI.**

These are available for those who have been a WI member for 25, 50 and 70 years – or you can edit the number of years.

Simply add the member's name and date.

The NFWI already provide congratulatory certificates for **WI groups** who reach their 25th, 50th, 75th and 100th anniversaries. If you would like to celebrate a different anniversary, you can download the template and edit the anniversary accordingly.

All templates can be easily downloaded and customised and can be found on My WI at:

<https://mywi.thewi.org.uk/running-your-wi/congratulatory-certificates>

Federation Events

Brenda Barnett Competition 2021

Postponed from 2020, our groups were challenged to display 3 craft items on the theme Musical Memories, popular or classical. The entries were displayed for judging at WI House.

The winners of the Brenda Barnett Trophy 2021 are.....

Forest Group

'Oh I do like to be beside the seaside'

Congratulations and thanks to all groups who entered.

Our other entries (l-r) Beacon, Borderland and Fosseyway.



Our Board of Trustees have presented our 2021 trophies

Maxilyn Geary presented Sylvia Cole from Anstey WI (pictured right) with the Edith Buckley Trophy. Sylvia keeps herself busy as a parish councillor for the Thurstaston Ward and belongs to various local and international groups that have been meeting via zoom during COVID. Although this takes up a lot of her time, she has written a 100 day diary to keep in touch with friends around the world telling them about her life and what she was doing day to day. A friend of hers was so impressed that he put it together and has had it published for her.



Linda Martin presented Dorothy Tomlinson from Peatling Magna WI (pictured left) with the Margaret Johnston trophy for her piece on 'The Ups and Downs of 2020'.

Glenice Wignall presented Pat Sills from Kirby Muxloe WI (pictured right) with the Jose Smart trophy for her 'Time for Tea' display of flowers in a teapot. Pat was able to celebrate with fellow WI members.



This month's Risotto recipe from Gail really does live up to its name, and Jacqui's recipe for Cherry Clafoutis is a delicious way to serve this season's cherries.

Chuck and Bung Easy Risotto

Just place in an oven proof dish, stir and throw in oven. Serves 6 to 8.

Ingredients

1 500g box Arborio rice
1 box closed cup mushrooms - chopped
1 box chestnut mushrooms - chopped
1 clove garlic crushed
½ large onion, chopped
3 knorr stock cubes made up to 1 ½ pints with boiling water - if too weak recipe is very bland.
Add chopped celery, or other chopped vegetables if desired.
Flavour stock with lemon juice or wine if available.



Fill oven proof dish, stir and dump in oven for 30 minutes at Gas 6 or 200° C, check after 15 minutes - top up with ½ pt hot stock if needed. When rice is 'al dente', remove from oven, rest 5 minutes then stir in heaps of grated parmesan (100g) and Medium pot of double cream.
Serve with black pepper - possibly top with parsley too.

Cherry Clafoutis

Soak Cherries 2 hours ahead

Serves 4

Ingredients

For the cherries

450g cherries
3tbsp caster sugar, extra to dust
3 tbsp kirsch, optional

For the batter

20g unsalted butter
2 eggs
3tbsp caster sugar
½ tsp vanilla extract
1 heaped tbsp plain flour
50g whole milk
75g whipping cream
Pinch sea salt



Gently mix the cherries, kirsch and sugar, leave to macerate for 2 hours.

Preheat oven to 180C/gas 4. Grease a baking dish with butter and sprinkle with sugar, tip out any excess.

For the batter heat butter in a small pan until it turns a pale hazelnut colour (Beurre Noisette) do not burn!

In a large bowl whisk together the eggs, sugar and vanilla until creamy. Add the flour, whisk until smooth, then slowly incorporate the milk, cream, salt and butter (Beurre Noisette).

Mix the macerated cherries and their juice into the batter and pour into prepared dish.

Bake in the oven for 30-35 minutes, or until top is slightly domed and the blade of a knife inserted in the middle comes out clean

To finish, sprinkle with caster sugar (or icing sugar) and serve warm.

Polly is sharing her love of sweet peas with us this month:



Under the sweet-peas I stood
And drew deep breaths, they smelt so good,
Then, with strange enchanted eyes,
I saw them change to butterflies.

Alfred Noyes (1880-1958) poem 'A Child's Vision'

How to grow: Lots of interesting facts about growing popular sweet peas.

Generally, Autumn sown will produce stronger plants and early flowers, Spring grown will usually flower 12-14 weeks after sowing.

Just remember that mice love sweet peas too, so start off indoors or cover pots to avoid scrumping mice!

For best results grow sweet peas in a rich fertile soil up a trellis, pinch tips of seedlings to help plants bush out and pick the flowers regularly to encourage more buds.

The RHS link below is a good guide to growing sweet peas

<https://www.rhs.org.uk/plants/popular/lathyrus/growing-guide>

Varieties: Perennial unscented and Annual highly scented – Spencer varieties are most popular for growing
Links:

National Sweet Pea society www.sweetpeas.org.uk

Owl Acre sweet peas www.owlsacreseeds.co.uk

Kings Seeds www.kingsseeds.co.uk

Chiltern seeds: www.chiltern.co.uk

Sarah Raven: www.sarahraven.com/articles/the-sweet-pea-story.htm

Gardens to visit

Eastern Walled Garden, Grantham, has an annual sweet pea display. www.visiteastern.co.uk

If driving via Melton Mowbray go through Colsterworth and over bridge at end of village to avoid A1 road.

A Buzz in the Garden

A Buzz in the Garden - Planting for Bees

The recent virtual federation event, A Buzz in the Garden was enjoyed by lots of you. We were lucky to hear from Richard Rickett editor of 'Bee Craft', the national magazine for beekeepers, about all things bees, including the wide range of types of bees and how to plan your garden to encourage more bees to visit. The talk was especially relevant as many WI's continue to champion saving the bees, taking planting action and joining the national campaign, SOS for Honey Bees.



With so many hints and tips shared, we thought many more of you would like to have access to the seasonal planting schemes and garden ideas to increase the bees visiting your gardens.

The snippet below for the summer months is just a peek at the bee friendly gardening guide, which you can find on the federation website in federation downloads, [click here to access it](#). See page 7 for information on taking part in the Bugs Matter survey!

Summer superstars

Richard's favourite summer plants suitable for bees of all types are; Asters (Michaelmas daisies), Buddleia, Calendula (common marigold), Cosmos Dahlias (single), Echinacea (coneflowers, rudbeckia), Echiiums, Eupatorium, Fuchsia, Forget-me-not, Foxglove, Gaillardia, Helenium's (sneezeweed), Hyssop Lambs ears, Lavender (intemedia Gros bleu especially good) Lungwort Meadow foam (poached egg plant), Nepeta - catmint, Phacelia (can be used as a green manure), Rockrose, Salvias, Sedums (stonecrop), Sunflowers, bugloss, Virginia creeper, Boston ivy, Wood anemone.

Leisure Activities

In June, 19 ladies from across the counties joined the first WI walk this year. Ladies from Cossington, Groby, Burbage, Birstall, Burton Lazars and New Barkby met and walked to Abbey Park via Old Belgrave along the river and canal. They had a picnic and drink in the park and returned via the Space Station and Ellis Meadows. Although it was a hot day everyone really enjoyed the get together. Let's hope we can arrange some more.



After our successful walk organised by the Leisure Committee, it had been suggested that WIs across the Federation may like to organise a walk that members from other WIs can join in. We will advertise the walk in County News and on Facebook, just let us know—the date, meeting place/car parking, start time, approx. distance, terrains—hills, stiles etc, whether to bring something to eat/drink.

Please contact **Maxilyn Geary** Email: maxilyngeary@lrfwi.org

Leisure Activities Walk

Cossington Meadows, Thursday 5 August 10am

Cossington WI and the Leisure Activities Committee have organised a walk on 5th August around the Cossington Meadows area.

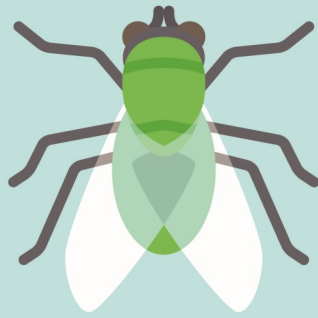
This is approximately a 5 mile walk (a shorter walk will be available for people that prefer less), mostly on public footpaths across meadows and fields.

We are meeting at All Saints Church, Main Street, Cossington, LE7 4UU, where parking is available, and will start at 10am prompt. Derrys Nursery and the Royal Oak are just down the road for drinks and eats afterwards.



To book a place please email wihouse@lrfwi.org with your name, WI and telephone contact details.

Bugs Matter Survey



Bugs Matter

If you watched A Buzz in the Garden you will know that Richard told us how many species of insects we have already lost. Just cast your mind back to when you used to have to clean greenflies from your windscreen in the 'old' days. That's the main clue. I've joined up to the Bug Life's survey which is running from 1st June to 31st August to identify where the most, or least, insects are.

Download the free App from <https://www.buglife.org.uk/get-involved/surveys/bugs-matter> and you don't need to pay anything to take part in the survey. It's really simple and they send you a printable grid that you use on your number plate and at the end of your journey you record how many insects there are. I'm amazed, but also sad, to see how few I've 'collected'. You don't need to be the driver but you need their permission. All the information is on the link. I found it a bit hard to take a photo whilst holding the grid on my number plate but have devised a cunning plan – an office clip. (Eat your heart out Baldrick!) Why not have a go? It costs nothing – just a bit of your time.

Margaret Osborne, Hollycroft WI

Around the Counties

Broughton Astley

At our May meeting we shared the briefing information provided by Target Ovarian Cancer UK to consider the resolution being discussed at Annual Conference this year "to raise awareness of the subtle signs of ovarian cancer". Members will be asked to vote after further input from Conference in June. We also had a short presentation on the work that our Pennies for Friendship collections support through ACWW.



Jane Acres won our Garden on a Plate competition with some very attractive planting.

Eleven members, including three from other WI's in our Group, joined in a zoom Paint Along workshop with the Quirky Bird, Lynn Barrow. We had a very enjoyable and productive afternoon painting a card, a small picture, a bookmark and two gift tags from one sheet of A4 paper.



Sheila Loughan, Rosie Bannister and Fran Marsland have been knitting little hats for Age UK Leicestershire's The Big Knit project and have reached over 100 so far!



We had our first outdoor group meeting in the Recreation park and the weather was very kind to us. Of course we were socially distanced (except briefly for the photo!) and brought our own chairs, hand sanitiser and refreshments. It was really good to see so many of our friends in person after so long, despite zoom meetings and phone calls, and look forward to many more until our meetings can return to "normal".

Stoke Golding

Power point presentation by member Anne Fullagar
of her trip around South America

Anne's trip was based on a beautiful Cruise Liner Queen Victoria. The first 7 days crossing the Atlantic were a bit rough on the way to Bermuda, Anne showed us some lovely photos of the island.

She explained that the rooves of the houses were painted white to deflect some of the sunlight, and they all have important rain conservation methods as it is extremely important to conserve as much rainwater as possible. We saw a lovely photo of a beach taken on the way to St George in the north of the island. There was a replica of a very old ship in the harbour. The ship then moved on to Florida and onto the Amazon River starting with an outing to see the Opera House in Manaus, a beautiful building. Then some shots of the market, very colourful.

This was followed by a walk in the rainforest near Santarem. The ship came out of the Amazon and turned down the coast to Salvador old town which is a UNESCO world heritage site. We saw the beautiful church of St Francis built in 16th Century. Salvador was once the premier slave port of Brazil and the African culture is kept alive here. Moving on to Rio and there was a cable car ride up to Sugar Loaf Mountain and a train up to Corcovado and the Christ the Redeemer Statue covered in mist.

In Montevideo, Anne met up with Ciaran McGrath, who has been working in Uruguay and who is the son of fellow member Mary.

The following day Anne's ship crossed the estuary and docked at Buenos Aires. En route to a tasting of Argentinian wines they passed the Casa Rosada, where Eva Peron stood on the balcony to speak to the people.

Heading south to Patagonia, Anne went to a wildlife area with seals, sea lions and penguins.

There followed a rough passage down to Cape Horn, but it was quite calm when they got there.

After circling the island, the ship visited Ushuaia in the Beagle Channel and Punta Arenas on the Magellan Strait before emerging into the Pacific Ocean. Heading northwards along the coast of Chile the ship made several stops and Anne was able to visit Santiago and its beautiful cathedral.

The talk finished there as we had run out of time, but hopefully we can hear more at another time.

Cossington

'If it's Friday and it's five to five, then it must be.....?'

May's Zoom meeting proved to be an evening of nostalgia for **Cossington WI** when guest speaker Kath Reynolds reminded members of popular children's TV characters from the 1950s through to 1970s.

Kath's talk titled 'Watching with Mother' recalled Muffin the Mule, Andy Pandy, Lassie, Thunderbirds, Blue Peter, Skippy, Magic Roundabout, Jackanory, Tingha and Tucker plus far too many others to mention.

Of course 'If it's Friday and it's five to five, then it must be Crackerjack.



Hathern

Half of the members of Hathern WI joined our zoom presentation from Gillian Walnes Perry, 'The Social History of English Afternoon Tea', including one member who joined on her land-line phone, so could only hear the presentation. This is the second talk that we have had from Gillian, the first in October 2020 about Anne Frank, both talks were very informative, well researched and put across in an engaging manner.

We have been holding zoom talks monthly since last June and find that we can invite speakers from further afield than we would be able to have speak to us in person, for example, Gillian lives in Kent.

Our members were asked to have their drink of choice in a tea cup and saucer to join in with the theme of the evening, and there were several lovely ones on display, including the pictured one provided by our President Gail Wooliscroft. The cup and saucer had been painted as apprentice pieces in the pottery industry in Stoke-on-Trent by her mother on 12th October 1936 when she was 14 years old. Gillian was so impressed by the items that she is going to include them in a book about afternoon tea that she is writing and hoping to publish next year.



Sheepy

In May, Sheepy WI were entertained by Lucy Morgans a self employed travel counsellor. She talked about how she came to work in the industry. Then moved onto her three favourite places to visit. One of them was Treetops in Africa, where Queen Elizabeth was staying when she learnt that her father had passed away. She recalled that the bedrooms have a button you can press which then prompts staff to wake you if there is anything of interest to see from the viewing gallery! She then talked a little about how the pandemic had impacted on her business. She highlighted that if we travel to an amber country this is going against home office advice and this would possibly void your travel insurance. Members found her to be an interesting speaker, and I think a few might be consulting her when planning their next holidays.

Birstall and Wanlip

Birstall & Wanlip WI ladies have been helping the Birstall Community and Scrub teams to put together some memory bags for Rainbows. These bags are given to parents when their baby reaches end of life.

Beverly Blackburn knitted 10 pairs of identical bears and Marian Thwaite knitted a blanket, these go in a hand made bag with 2 identical hearts and a memory book. Thank you for all your continued hard work.



Birstall & Wanlip had their first face to face meeting on 17th May (groups of 30 outside allowed).



The speaker Andrew assisted by Carolyn, both Trustees of the Belgrave Heritage Trust, spoke about St Peters Church, the history behind some of the gravestones and people that had been buried in the churchyard

dating back to the early 19th century and before.

Everyone enjoyed the talk and the picnic afterwards in the park. Ladies are looking forward to meeting again soon and joining some planned walks.



[#belgraveheritagetrust](https://www.belgraveheritagetrust.org/)

Oakham



On 17 May Oakham WI took advantage of the relaxation of Covid restrictions by meeting to take part in a history walk around Langham.

Despite the threat of rain 18 members followed the described route, finding out about the Ruddles Brewery, the Gainsborough Estate and the wind direction dial on the

Old Hall Gate House, designed so that on the return from church Owen Smith, the wealthy merchant banker owner of the Hall could determine the wind direction for hunting purposes.

After the walk we all repaired to the marquee outside the Wheatsheaf pub to enjoy coffee, cake and a chat.



Whilst we have had regular Zoom meetings and met in groups of six it was so good to see so many members together.

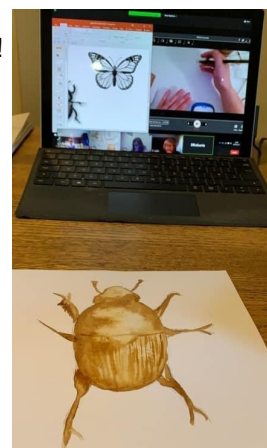


Sileby



Sileby WI got creative with coffee for May's meeting! We were joined by Sarah Roberts who makes amazing paintings using just coffee and water! Sarah gave us a tutorial on how to paint with coffee and the different techniques you can use to create art. We were shown how to paint insects and we all had a go ourselves.

It was great fun and we shared our creations at the end of the meeting.



Blackfordby



A big thank you to all the ladies of Blackfordby WI who made the bunting decorating the area around Blackfordby War memorial. The bunting has been in place for the whole of May and will stay there until the end of June for a village open gardens event, Blackfordby in Bloom.



On June 1st we had our first meeting where twenty four members and two guests were all able to gather in person entirely in line with current Government Covid rules. We met in our president's paddock where we had a lovely 'meeting in a bag'. Each bag had a mug, biscuit, quiz, pen, pencil and sharpener.



Hollycroft

Hollycroft WI zoomed into the fantasy world of Peter Rabbit and friends when the speaker for their virtual May meeting was Annalie Talent. Members learned that Beatrix Potter was not just a writer of books for children. Brought up by wealthy parents in London a letter she wrote to the son of a governess with accompanying sketches revealed her early talent for comic writing. Along with her brother, Bertram, and their shared love of animals she honed her artistic skills sketching pets ranging from hedgehogs and lizards to bats.

The pair were not over sentimental and boiled their dead pets to extract the skeletons to increase their anatomical knowledge. Following a holiday in Scotland Beatrix became fascinated with fungi and later wrote a scientific paper on the subject of spores. Her observational humour is evident in one of her lesser known works, The tale of The Pie and the Patty Pan, which pokes fun at polite society, gleaned from her experience of Victorian Kensington drawing rooms as a young adult.

She inherited her love of art from visiting art galleries with her father. Caldecott's work 'Frog he would a-wooing go' inspired her character, Jeremy Fisher. Her anthropomorphic attitude to nature was not originally welcomed, nor her stipulation that her books should be little books for little hands.

An astute businesswoman, even in her 20s, she conducted all her own negotiations and received many rejections before self-publishing. After the first 250 copies sold out immediately, Warne publishers became interested but stipulated colour instead of Beatrix's pencil drawings. 50,000 copies were sold in the first year. She sold the patent for her Peter Rabbit toy to Steiff and with the profits from the sale of her designs for greetings cards bought her own printing press.

After the heart-breaking early death of her fiancé, Norman, she bought Hill Top farm in the Lake District and applied her energies to becoming a successful sheep farmer. She later married William Heelis and was instrumental in buying up land to prevent over development, leaving it to the National Trust on her death. A lasting memorial to a remarkable lady.

Annalie urged members to visit Hill Top farm which remains much the same as when Beatrix lived there as some of the furniture featured in her books is still in situ.



Great Bowden

Great Bowden WI held its first meeting via Zoom on Wednesday 5th May. Twenty- four members logged on for a lively exchange of how they spent lockdown. An array of activities had been undertaken, including complicated jigsaws, painting by numbers, patchwork quilting, singing with online choirs, and the progress of the sunflowers which many members are growing. One of our members had been working sixty -hour weeks at the Woodlands Hospital and helping with the vaccination programme.

Around 30 members visited the gardens of Westbrook House, Little Bowden on 7th June 2021 where they enjoyed the sunny weather and were able to have a chat over a lovely cream tea.



The gardens are beautiful with a walled garden, a meadow and some unusual features including animal sculptures. Everyone enjoyed their time there.

Westbrook House organises these teas for charity and Great Bowden WI raised £180 as a donation.



A Zoom meeting for members of the Great Bowden WI was held on 9th June. Those who attended listened to an interesting talk by Murray Jacobs which took the form of a virtual tour of Cambridge. As members passed historic buildings they were treated to anecdotes. At Kings College Chapel, famous for its Carols at Christmas, apparently, each year four Santa Hats appear on each of its 150ft spires and these have to be removed by professional steeplejacks. Another prank by Engineering Students took place in 1958 when an Austin Seven was winched on to the roof of the University's Senate House. This was an ingenious feat and several other cars later appeared in strange places. On the door of the Taylor Library at Corpus Christi College is the unusual Gold Grasshopper Clock in which the mouth of the Grasshopper appears to eat up time. The clock was unveiled by Stephen Hawking in 2008. Face to face meetings are still not possible but Great Bowden are still very active and lots of activities are coming up including walks, a Treasure Hunt and a Coffee Morning.

Check our website: greatbowdenwi.org.uk for full details.

Anstey

For Anstey WI, the May meeting was postponed until later in the month, and was held on Zoom. After debating the resolution to raise awareness of the symptoms of ovarian cancer, and voting to support it, a few members read poems and funny stories.

In June we were able to meet face to face (hurrah!) in three committee members' gardens. What a joy it was to really meet again, and the weather was kind. This too was a relief, after wet, chilly May. A good time was had by all. The hostesses provided drinks, and their guests contributed delicious cakes and biscuits. The smoothie hats members had been knitting were collected for delivery to Age UK.



Copy for County News

Please send material for inclusion in County News to **WI House** by e-mail: wihouse@lrfwi.org or post to arrive by the **FIRST** of the preceding month at the latest.

Adverts and announcements by the same time to finance@lrfwi.org.

Advertising Rates

WI Announcements 5p pw
For sale/wanted (WI only)
5p per word text only. £5 per column inch with graphics.
Minimum charge £3.00
Charity rate £5.00 per column inch
Commercial rate (including WI members business advertising)
£9.00 per column inch

Discounts available for regular advertisers. Please pay on receipt of invoice only.
Cheques made payable to LRFWI and sent to WI House.

We do not accept any responsibility for any adverts published in County News. Advertisements are accepted subject to space available.

WI Diary 2022



You can now order your 2022 WI diary from your WI Secretary.

The diary is dark green and completely recyclable (except for the ribbon)!

Diaries are £5.50 each.

Orders from WI Secretaries are to be received at WI House before **Thursday, 29 July 2021** so please order from your WI Secretary in plenty of time!

Monthly Draw Winners!

Congratulations to our Monthly Draw winners for May!

1st Prize £25

No. 44

Genesta Cope, Hollycroft WI

2nd Prize £15

No. 51

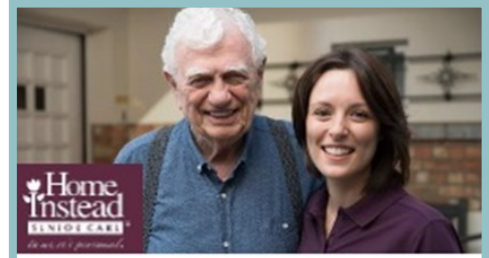
Christine Gerrard, Cossington WI

3rd Prize £10

No. 7

Jackie Ingram, Newbold Verdon WI

Thank you to all of the members who have supported the Federation by buying a Monthly Draw ticket!



Outstanding
care in your own home

01858 540 317
01572 898 147

www.homeinstead.co.uk



MARTIN TIBBLES



PAINTING & DECORATING SERVICES

For all your home and Exterior re-decoration requirements by a qualified tradesman.

Covid Vaccinated

Contact Martin on
0116 2910489 or 07855 412 945

Free estimates and advice given.

Excellent references

with nearly 40 years experience

CFS Computers

PC & Laptop Repairs
Virus Removal—Data Recovery
Websites—Screen Repairs

01530 231971
07815 810691



www.cfscomputers.co.uk



Bespoke Kitchens & Furniture

Handmade in Leicestershire

Free quote ~

ArtiCad design ~

Custom made ~

Delivered & fully fitted ~

www.ChrisCopleyFurniture.co.uk

01664 454275 | 07921 262598

enquiries@chriscopeleyfurniture.co.uk