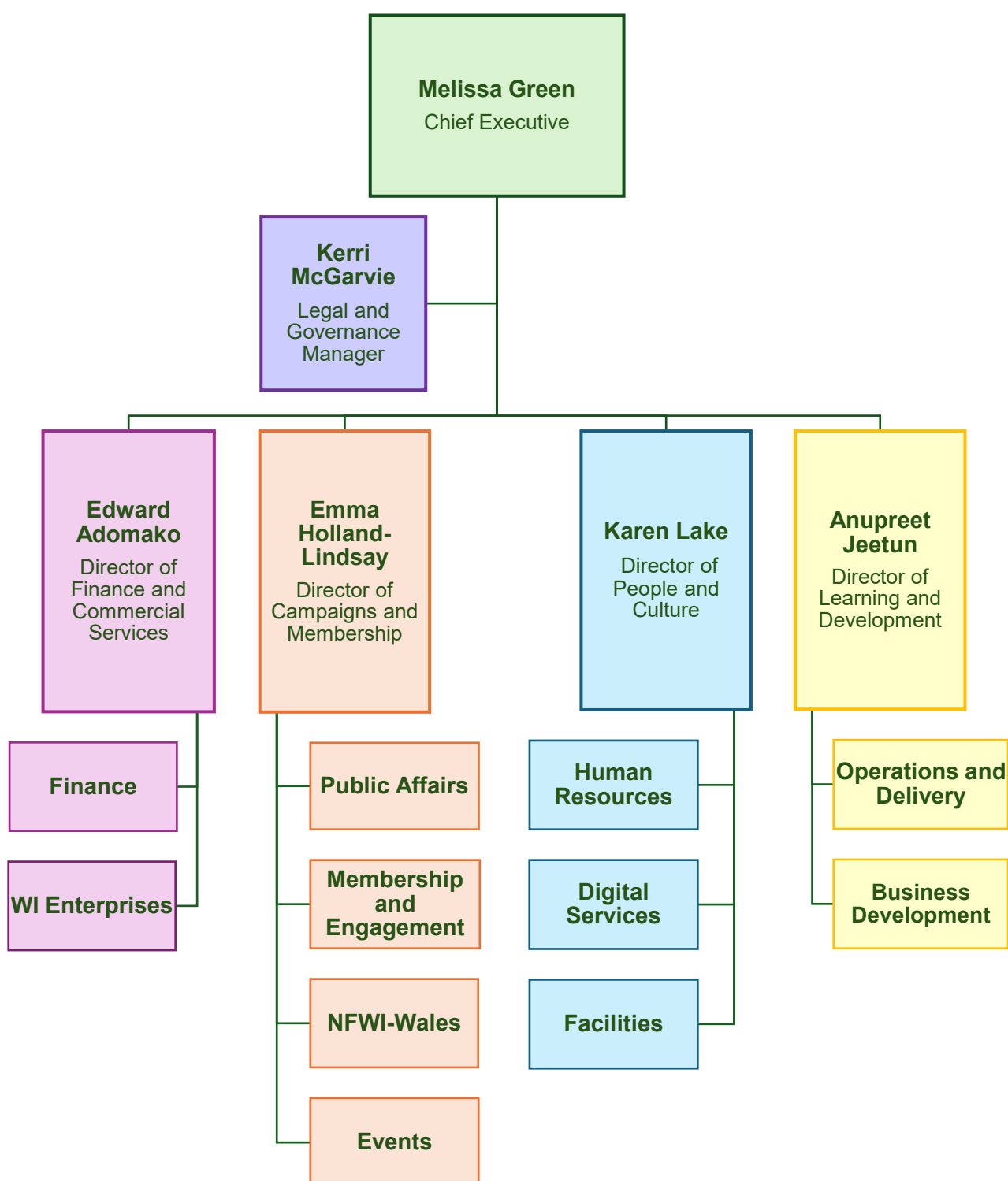


## NFWI Structure and Staffing List as of December 2025



<b>Finance and Commercial Services</b>	
<b>Edward Adomako</b>	Director of Finance and Commercial Services
<b>Finance</b>	
<b>Thasha Ravennaath</b>	Finance Manager
<b>Kala Ratnakumar</b>	Finance Officer
<b>Erika Kaic</b>	Finance Officer
<b>Dawn Kent</b>	Finance and Data Protection Support Officer
<b>Fundraising</b>	
<b>Kelly Gibson</b>	Fundraising Manager
<b>WI Enterprises</b>	
<b>Genevieve Sioka</b>	Head of Commercial- WI Enterprises
<b>Carlos Fialho</b>	Marketing and Project Manager
<b>Jules Storer</b>	Marketing and Project Assistant
<b>Advertising</b>	
<b>Ian Armstrong</b>	Interim Display Sales Manager
<b>Shirley McGlynn</b>	Display Sales Executive
<b>Editorial</b>	
<b>Megan Baffoe</b>	Editorial Assistant
<b>Sarah Drew Jones</b>	Freelance Editor

<b>Campaigns and Membership</b>	
<b>Emma Holland-Lindsay</b>	Director of Campaigns and Membership
<b>Public Affairs</b>	
<b>Aanchal Mann</b>	Campaigns and Public Affairs Manager
<b>Tobias Arnø</b>	Research and Campaigns Officer
<b>Ellie Brain</b>	Research and Campaigns Officer
<b>Bláithín Carroll</b>	Campaigns Assistant
<b>Membership and Engagement</b>	
<b>Joanna Rayner</b>	Head of Membership and Engagement
<b>Vicky Constantine-Foster</b>	Membership Operations Manager
	<i>Membership Development Manager (vacant)</i>
<b>Francesca Laviolette</b>	Membership Support Officer
<b>Charlotte Maughan</b>	Membership Assistant
<b>Rob Dyson</b>	Freelance PR Consultant
<b>NFWI-Wales</b>	
<b>Rhian Connick</b>	Head of NFWI-Wales
<b>Sarah Thomas</b>	Public Affairs Officer
<b>Lisa Howells</b>	Events Coordinator
	<i>Administrative Assistant (vacant)</i>
<b>Events</b>	
<b>Kelly Rosser</b>	Events Executive

<b>People and Culture</b>	
<b>Karen Lake</b>	Director of People and Culture
<b>Human Resources</b>	
<b>Andrea Mitchell</b>	HR Manager
<b>Katie-Niamh Meehan</b>	HR Coordinator
<b>Digital Services</b>	
<b>Jason Douglas</b>	Head of Digital Services
<b>Alexandra Taufmann</b>	Digital Content Editor
<b>Olivia Li</b>	Digital Assistant
<b>Facilities</b>	
<b>Latel Monks</b>	Facilities Manager
<b>Kate Robinson</b>	Facilities and Events Assistant

<b>Learning and Development</b>	
<b>Anupreet Jeetun</b>	Director of Learning and Development
<b>Emma Stenning</b>	Committee Administrator
<b>Dominique Walravens</b>	Customer Support Assistant
<b>Operations and Delivery</b>	
<b>Kelly Mauger</b>	Education Operations Manager
<b>Michelle Branch</b>	Training and Quality Assurance Officer
<b>Business Development</b>	
<b>Helen Neal</b>	Business Development Manager
<b>Lucy Willis</b>	Business Development Officer